



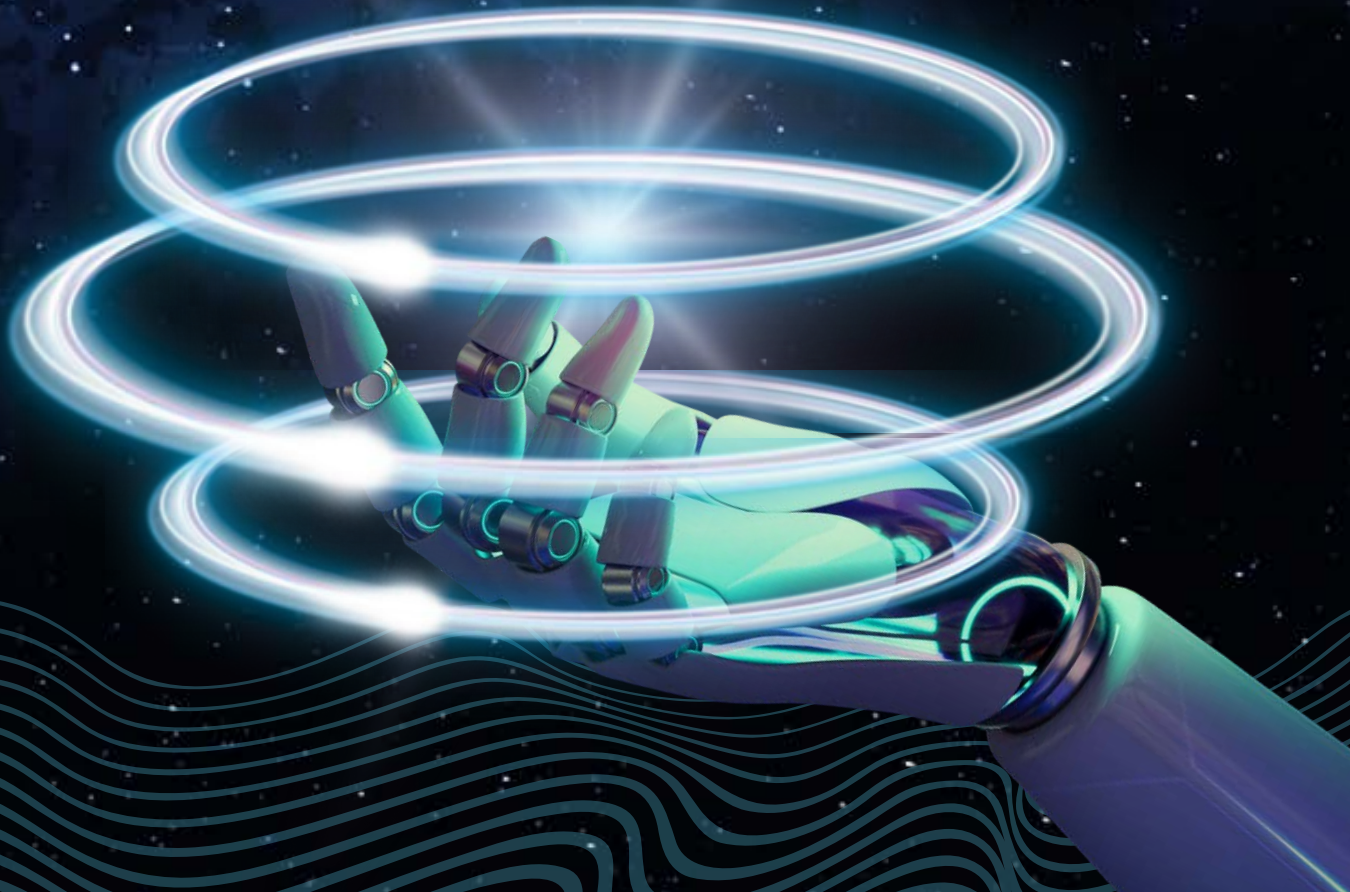
**THE  
DATA  
COMPANY**  
YOUR DATA | OUR EXPERTISE

migrate

**FINIUM**

**FOR FUTURE-FIT  
DATA MIGRATION**

powered by our advanced  
and highly flexible data  
platform, **dataFINIUM**.



**SIMPLIFYING COMPLEX DATA  
FOR SMARTER BUSINESS DECISIONS**

The significance of future-fit data and how **migrateFINIUM** empowers the Insurance Industry to migrate their data with confidence.

In the ever-evolving insurance landscape, data migration is a critical challenge for insurance organisations looking to stay ahead in the digital age.

At The Data Company, we understand the unique demands of the insurance industry and have developed a robust data migration solution, **migrateFINIUM** which is powered by our advanced and highly flexible data platform, **dataFINIUM**.

With over 20 years of experience in insurance migration design, build, and delivery, we have honed our methodology to deliver exceptional results.

Let's explore the significance of future-fit data and how **migrateFINIUM** empowers insurance organisations to migrate their data with confidence.

## UNDERSTANDING FUTURE-FIT DATA IN INSURANCE

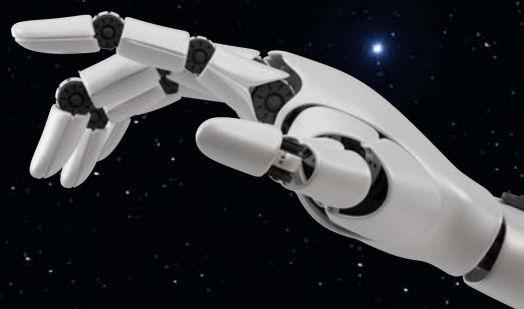
In the insurance industry, **future-fit data** is essential for driving growth, profitability, and improved customer experiences. It refers to data that is well-prepared and ready to meet the challenges and requirements of tomorrow's digital and data-driven world.

This includes ensuring data relevance, quality, accessibility, scalability, flexibility, and adhering to ethical considerations and privacy regulations.

**Future-fit data** enables insurance organisations to unlock valuable insights, streamline processes, and deliver superior services to policyholders.

## THE POWER OF **migrateFINIUM** FOR INSURANCE

At The Data Company, our **migrateFINIUM** solution is powered by our **dataFINIUM** platform and is tailored to meet the specific needs of all insurance organisations. **migrateFINIUM** empowers seamless data migration while minimising disruptions to critical operations.



**SEAMLESS TRANSITION FOR INSURANCE MIGRATION:**

Leveraging our deep expertise in insurance migration design, build, and delivery, we ensure a smooth transition from legacy systems to modern platforms. We understand the complexities involved in migrating policy, claims, underwriting, and billing data, ensuring accurate and complete migration.

**FLEXIBILITY AND SCALABILITY IN INSURANCE DATA:**

migrateFINIUM offers unmatched flexibility, adapting to changing insurance data requirements. It seamlessly handles growing volumes of policy data, integrates with underwriting systems, claims management platforms, and billing systems, and supports diverse data formats.

**DATA QUALITY AND INTEGRITY IN INSURANCE:**

In the insurance industry, data accuracy and reliability are paramount. With migrateFINIUM, we implement robust data cleansing, validation, and verification processes. This ensures accurate policyholder information, loss data, and premium calculations for informed decision-making and regulatory compliance.

**SECURE AND COMPLIANT INSURANCE DATA MANAGEMENT:**

As an insurance organisation, data security and compliance are critical. migrateFINIUM adheres to stringent privacy regulations and ethical considerations, ensuring responsible data usage and protecting sensitive policyholder information.

DELIVERING EXCEPTIONAL RESULTS



- Seamless Transition for Insurance Migration
- Flexibility and Scalability in Insurance Data
- Data Quality and Integrity in Insurance
- Secure & Compliant Insurance Data Management

## OUR ADVANCED AND HIGHLY FLEXIBLE DATA PLATFORM.



### THE POWER OF OUR dataFINIUM PLATFORM

At the core of our migration methodology (migrateFINIUM) lies dataFINIUM, our advanced and highly flexible data platform.

This state-of-the-art platform serves as the backbone of our migration process, enabling efficient and reliable data transfers, and making your data future-fit.

With dataFINIUM, we can seamlessly handle large volumes of data, ensuring the integrity and accuracy of your information throughout the migration process.

dataFINIUM's flexibility allows us to adapt to various data structures, ensuring compatibility with your existing systems.

### COMPONENT INTEGRATION

One of our key strengths is our ability to quickly combine "component parts" into high-performance platforms. We excel in integrating different components, such as databases, applications, and middleware, to create cohesive and efficient data migration platforms.

By leveraging our expertise in component integration, we can optimise the performance and functionality of your data migration process, resulting in reduced downtime and improved efficiency, making your data future-fit.

### YEARS OF EXPERTISE

With over two decades of experience in insurance migration design, build, and delivery, we have developed a robust and time-tested methodology.

Our team has encountered and successfully addressed various challenges that arise during data migration projects.

We have honed our methodology to ensure that each step of the process is meticulously executed, resulting in a seamless and successful data migration, making your data future-fit.



By leveraging migrateFINIUM's capabilities, insurance organisations can unlock the full potential of future-fit data.

### ENHANCE UNDERWRITING AND RISK MANAGEMENT

Future-fit data enables insurers to access accurate and up-to-date policy data, facilitating robust underwriting and risk assessment. With migrateFINIUM, insurance organisations can make informed decisions, improve underwriting accuracy, and effectively manage risk exposure.

### STREAMLINE CLAIMS PROCESSES

Seamless data migration with migrateFINIUM ensures that claims data is readily available and accurately captured. This enables insurers to expedite claims processing, enhance fraud detection capabilities, and deliver prompt and efficient claims settlement.

### IMPROVE CUSTOMER EXPERIENCES

Future-fit data empowers insurers to offer personalised services and superior customer experiences. With migrateFINIUM, insurance organisations can access comprehensive policyholder profiles, enabling targeted marketing, tailored product offerings, and efficient customer service.

## EMPOWERING INSURERS WITH DATA MIGRATION CONFIDENCE

The logo for migrate FINIUM is centered within a circular graphic that is part of a larger infographic. The infographic includes a robotic hand pointing towards the logo and several icons representing insurance concepts like an umbrella, a gear, and a family.

### ENHANCE UNDERWRITING & RISK MANAGEMENT:

Future-fit data enables insurers to access **accurate & up-to-date policy data**, facilitating robust underwriting & risk assessment.

### STREAMLINE CLAIMS PROCESSES:

Seamless data migration with **migrateFINIUM** ensures that claims data is readily available & accurately captured.

### IMPROVE CUSTOMER EXPERIENCES:

Future-fit data empowers insurers to offer personalised services & **superior customer experiences**.

UNLOCKING THE POTENTIAL OF FUTURE-FIT  
DATA IN INSURANCE



In the insurance industry, prioritising future-fit data migration is essential for driving growth, improving operational efficiency, and delivering exceptional customer experiences.

At The Data Company, our migrateFINIUM solution, powered by our **dataFINIUM** platform, empowers insurance organisations to migrate their data with confidence.

By leveraging migrateFINIUM, insurers can unlock the potential of future-fit data, enhance underwriting and risk management, streamline claims processes, and elevate customer experiences.

Stay ahead in the insurance industry with The Data Company and migrateFINIUM.



SEAMLESS DATA MIGRATION.  
LIMITLESS POSSIBILITIES.

#### United Kingdom

##### England

1st Floor, Talbot House,  
17 Church Street,  
Rickmansworth, Hertfordshire,  
WD3 1DE, United Kingdom

UK +44 (0)1494 546089

SA +27 (0)66 483 2004

canwehelp@thedatacompany.com

<https://www.thedatacompany.com>

#### South Africa

##### Johannesburg

Block B1 & B2 El Ridge Office Park  
100 Elizabeth Road,  
Bartletts  
Boksburg, 1459  
Gauteng, South Africa



@The Data Company Technologies



@The Data Company

#### South Africa

##### Cape Town

Building B2, The Vineyard Business Park,  
0725 Adam Tas Street,  
Devon Park,  
Stellenbosch, Cape Town, 7600  
WP, South Africa



@DataCompanyTech



@thedatacompanytech