



**THE
DATA
COMPANY**

YOUR DATA | OUR EXPERTISE

migrate

FINIUM

**AS A SOLUTION IN THE
INSURANCE INDUSTRY**

**Empowering the Insurance
Industry to Confidently
Migrate their Data.**



**SIMPLIFYING COMPLEX DATA
FOR SMARTER BUSINESS DECISIONS**

**EMPOWERING THE INSURANCE INDUSTRY TO
CONFIDENTLY MIGRATE THEIR DATA.**



In today's data-driven world, efficient data migration is crucial for Insurance companies looking to upgrade their systems or transition to new platforms.

At **The Data Company**, we have developed a robust **data migration solution, migrateFINIUM**, that ensures a seamless transition while minimising disruptions, and ensuring data that is **future-fit**.

migrateFINIUM, powered by our advanced and highly flexible data **platform, dataFINIUM**, empowers organisations to migrate their data with confidence.

With **over 20 years of experience in insurance migration design, build, and delivery**, we have honed our methodology to deliver exceptional results.

Paving the way for **seamless data migration** which is well-prepared and ready to meet the challenges and requirements of tomorrow, ensuring the data is future fit. **Meaning, the data is relevant, of high quality, and easily accessible to authorised users.**

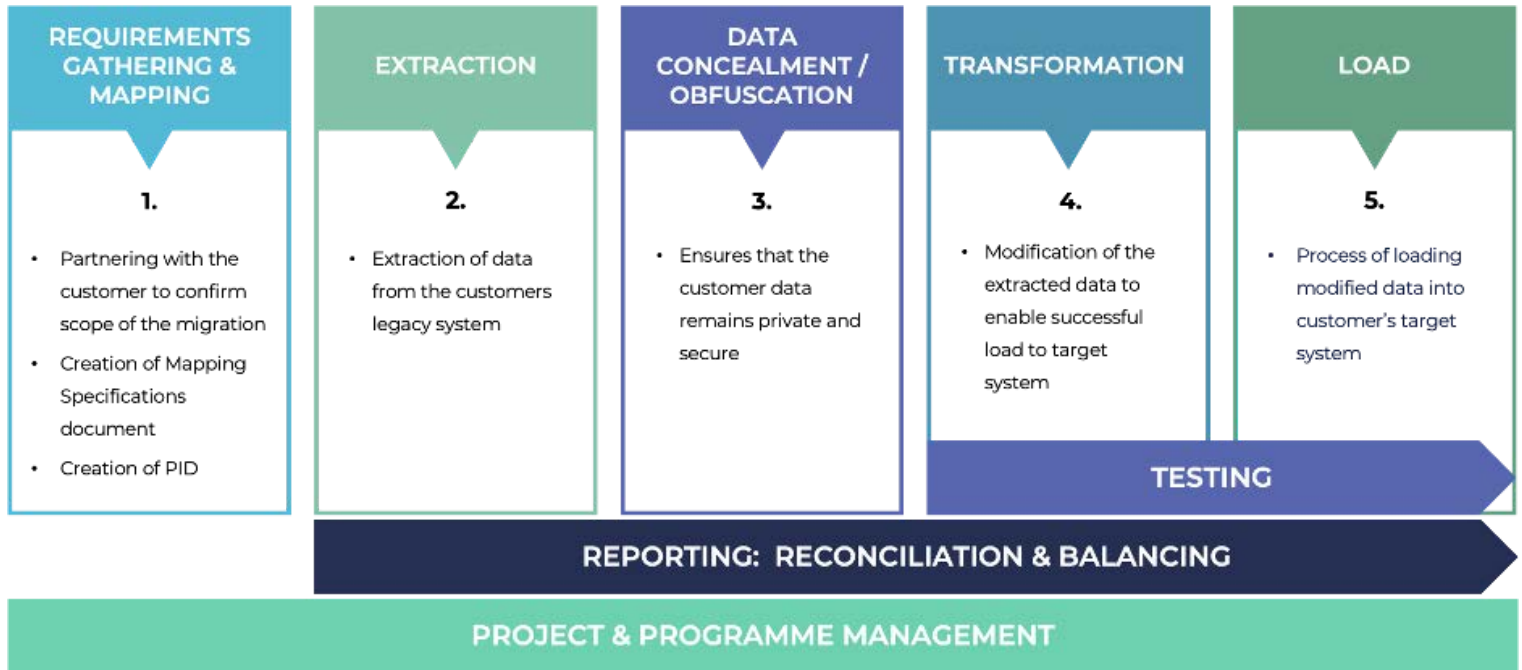
It **scales** with growing volumes and **adapts** to different platforms and systems. Moreover, it upholds **ethical considerations** and **privacy regulations**, ensuring responsible data usage.

With **migrateFINIUM**, you can **experience a seamless data flow process that drives informed decision-making, enhances operational efficiency, and empowers your organisation to stay ahead in a competitive market.**

**migrate
FINIUM**



In **Data Migration**, several **key data flow elements** are involved in the process. These elements help in the smooth transfer of data from one system or environment to another.



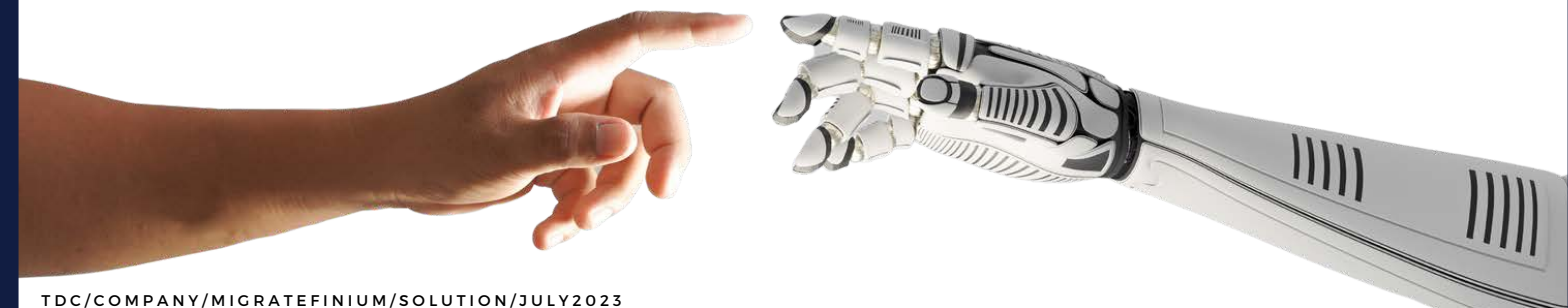
COMMON DATA FLOW ELEMENTS USED IN OUR DATA MIGRATION METHODOLOGY:

1. REQUIREMENTS GATHERING AND MAPPING:

We begin by thoroughly understanding your specific requirements and mapping out a comprehensive data migration plan using **migrateFINIUM**. This involves **identifying data sources**, **defining data relationships**, and **leveraging the platform's capabilities** to understand the structure of the target system.

2. DATA EXTRACTION:

Once the requirements are defined, our expert team proceeds with **extracting the data** from your source systems using **dataFINIUM's** extraction functionalities. We utilise efficient extraction techniques that **minimise disruptions** to your business operations, ensuring a **seamless transfer of data**.



3. DATA CONCEALMENT/OBFUSCATION:

To protect sensitive data during the migration process, **dataFINIUM** offers built-in data concealment or obfuscation techniques. This ensures that **personally identifiable information (PII)** and other confidential data **remain protected throughout** the migration process, ensuring compliance with privacy regulations.

The Data Company is **ISO27001** accredited, and we comply fully to both the **GDPR (UK)** and **POPIA (South Africa)** privacy policies.

4. DATA TRANSFORMATION:

dataFINIUM's robust transformation capabilities play a crucial role in aligning your source data with the requirements of the target system. Our team leverages **dataFINIUM's** industry-leading tools and techniques to transform and cleanse the data, ensuring its integrity and quality.

5. DATA LOAD:

With **dataFINIUM's** data loading features, we carefully load the transformed data into the target system. The platform's capabilities **prioritise accuracy and validation**, minimising the risk of data loss or corruption, and ensuring a seamless transition from your old system to the new platform.

6. DATA VALIDATION AND TESTING:

Data validation and testing are crucial elements in data migration. It involves **verifying the accuracy, integrity, and completeness of the migrated data**. We perform various tests to ensure that the data has been successfully migrated and is functioning as expected in the target system, including **data reconciliations and balancing**. This will ensure that the migrated data meets your expectations and complies with regulatory requirements.

7. DATA VERIFICATION AND RECONCILIATION:

After the data load and testing phase, data verification and reconciliation take place. This element involves **comparing the migrated data with the source data** to ensure consistency and identify any discrepancies or data loss during the migration process.

8. REPORTING:

To **provide transparency and facilitate decision-making**, we offer comprehensive reporting on the migration process. Our reports include **reconciliations, balancing, and other metrics** that enable you to assess the success of the migration.

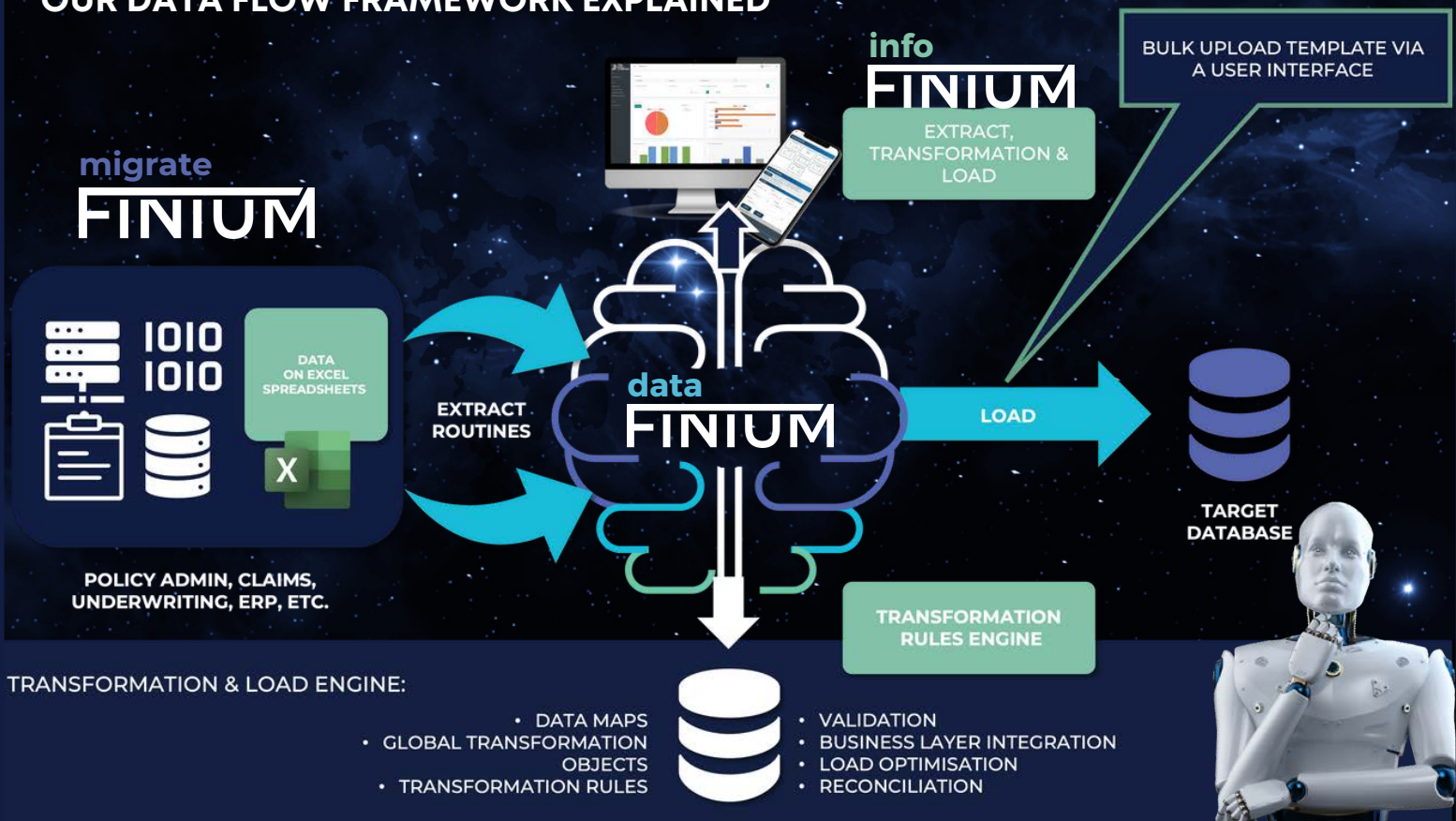
Reports will be presented through our **composable development system, infoFINIUM**.

9. PROJECT AND PROGRAMME MANAGEMENT:

In the context of data migration methodology flow, the last step of Project & Programme Management involves **overseeing the overall management and coordination** of the data migration project and its associated programs. This step focuses on ensuring that the project is **executed efficiently and effectively**, adhering to **predefined timelines, budgetary constraints, and quality standards**. It involves activities such as **resource allocation, risk management, stakeholder communication, progress tracking, and milestone achievement**. Project and Programme Management plays a crucial role in ensuring successful data migration by providing the necessary governance and direction throughout the entire migration process.



OUR DATA FLOW FRAMEWORK EXPLAINED



1. Source Systems

- **POLICY ADMIN, CLAIMS, UNDERWRITING, ERP**, and more
- Extract relevant data from multiple source systems within your organisation.

2. Extract Routines: Gathering Data Effortlessly

- **Execute extract routines** to efficiently gather data from various source systems.

3. dataFINIUM - Intelligent Data Hub

- **Ingest, Cleanse, Transform, and Enrich Data**
- Achieve a **"Single Source of the Truth"**
- Seamlessly handle structured and unstructured data from internal and external sources.

4. Transformation & Load Engine: Powering Data Transformation

- **Data Maps:** Effortlessly define mappings **between source and target** data elements.
- **Global Transformation Objects:** Applying standardised transformations to your data.
 - **Transformation Rules Engine:** Execute transformation rules for data refinement.
 - **Validation:** Ensure data quality and compliance.
 - **Business Layer Integration:** Incorporate business-specific logic into your data.
 - **Load Optimisation:** Optimise the loading process for efficiency.
 - **Reconciliation:** Verify data accuracy through reconciliation processes.

5. Our Composable Development Platform: Accelerating Application Development

- **infoFINIUM**
 - **Extract, Transform & Load (ETL) Process Made Easy**
 - **Leverage the agility of infoFINIUM** for rapid application development.
 - **Extract:** Retrieve transformed data from the **Transformation & Load Engine**.
 - **Transformation:** Apply additional transformations, if required.
 - **Load:** Seamlessly load the transformed data into your **target database**.

6. Target Database: Your Data Destination

- Enjoy the fruits of a streamlined data flow process as the final transformed and loaded data resides in your target database.



EXPERIENCE THE FUTURE OF DATA FLOW



With **migrateFINIUM** from The Data Company, you can achieve a seamless data flow process in the insurance industry.

Say goodbye to data silos and welcome a unified data environment that empowers your organisation with actionable insights.

Harness the power of **migrateFINIUM's Intelligent Data Hub, dataFINIUM.**

Leverage the capabilities of the Transformation & Load Engine, and Accelerate Application Development with **infoFINIUM.**

Contact us today to embark on a successful data migration journey with migrateFINIUM!



SEAMLESS DATA MIGRATION.
LIMITLESS POSSIBILITIES.

United Kingdom

England

1st Floor, Talbot House,
17 Church Street,
Rickmansworth, Hertfordshire,
WD3 1DE, United Kingdom



UK +44 (0)1494 546089

SA +27 (0)66 483 2004

canwehelp@thedatacompany.com

<https://www.thedatacompany.com>



South Africa

Johannesburg

Block B1 & B2 El Ridge Office Park
100 Elizabeth Road,
Bartletts
Boksburg, 1459
Gauteng, South Africa



@The Data Company Technologies



@The Data Company

South Africa

Cape Town

Building B2, The Vineyard Business Park,
0725 Adam Tas Street,
Devon Park,
Stellenbosch, Cape Town, 7600
WP, South Africa



@DataCompanyTech



@thedatacompanytech