



**THE  
DATA  
COMPANY**

YOUR DATA | OUR EXPERTISE

**migrate**

**FINIUM**

**ADDRESSING THE  
CHALLENGES OF DATA  
MIGRATION IN THE  
INSURANCE INDUSTRY**

**Navigate the Complexities  
of Data Migration with  
Confidence.**

**SIMPLIFYING COMPLEX DATA  
FOR SMARTER BUSINESS DECISIONS**

# DATA MIGRATION CHALLENGES WITHIN THE INSURANCE INDUSTRY

## 1. LEGACY SYSTEMS:

- Many insurance companies rely on legacy systems that were built decades ago.
- These systems often use outdated technologies and have complex data structures.

## 2. DATA VOLUME AND COMPLEXITY:

- Insurance companies deal with vast amounts of data, including policy information, claims data, customer details, financial records, and more.
- Migrating such large volumes of data while maintaining data integrity and consistency can be challenging.

## 3. DATA QUALITY AND CONSISTENCY:

- Inaccurate, incomplete, or inconsistent data can create significant issues during migration.
- Data may be stored in different formats or follow varying standards across different systems, requiring thorough data cleansing and transformation efforts.

## 4. DATA MAPPING AND TRANSFORMATION:

- Mapping data between source and target systems is crucial for successful migration. Insurance data often contains complex relationships and interdependencies, such as policy hierarchies, coverage details, and claim histories.
- Ensuring proper mapping and transformation of data to match the new system's structure and business rules is a critical challenge.

## 5. DOWNTIME AND BUSINESS CONTINUITY:

- Insurance companies operate in a highly regulated and time-sensitive environment. They must minimise downtime during migration to avoid disrupting business operations, customer service, and claims processing.
- Ensuring a smooth transition without impacting productivity is a significant challenge.

## 6. DATA SECURITY AND PRIVACY:

- Insurance companies handle sensitive customer data, including personal information, financial records, and medical details.
- Maintaining data security and privacy during migration is crucial to protect against data breaches or unauthorised access.

## 7. STAKEHOLDER ALIGNMENT AND CHANGE MANAGEMENT:

- Data migration often involves multiple stakeholders, including IT teams, business users, data owners, and external vendors.
- Ensuring proper communication, collaboration, and alignment among stakeholders can be challenging.
- Additionally, managing change within the organisation to adapt to new systems and processes is crucial for successful migration.

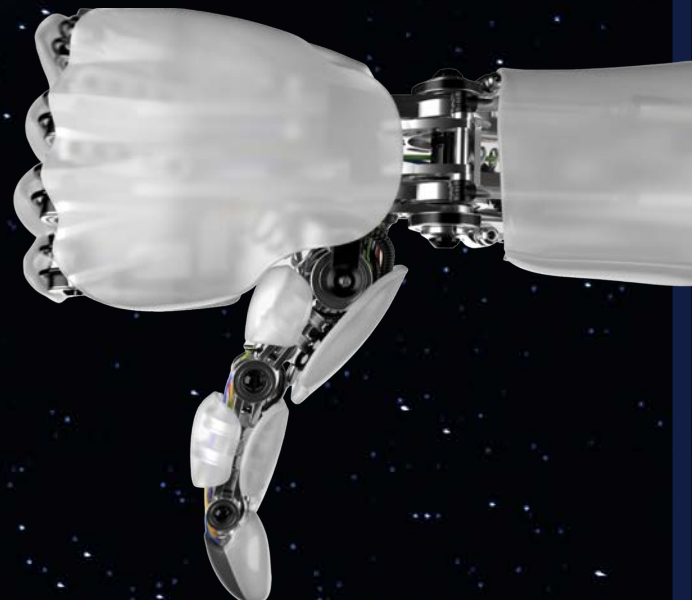
## 8. TESTING AND VALIDATION:

- Thorough testing and validation are essential to ensure the accuracy and integrity of migrated data.
- Creating test scenarios, executing data validation checks, and reconciling data between source and target systems can be complex, especially when dealing with large volumes of data.

## 9. REGULATORY COMPLIANCE:

- The insurance industry is subject to various regulatory requirements, such as data protection laws, reporting standards, and compliance frameworks.
- Ensuring compliance during data migration and maintaining audit trails can be a significant challenge.

# CHALLENGES



# HERE'S HOW WE SOLVE DATA MIGRATION CHALLENGES IN THE INSURANCE INDUSTRY:



## 1. LEGACY SYSTEMS:

- Through requirements gathering and mapping, we identify the data sources and their structure within the legacy systems.
- Using **dataFINIUM's** extraction functionalities, we extract the data from the legacy systems, regardless of their outdated technologies or complex structures.

## 2. DATA VOLUME AND COMPLEXITY:

- Our **dataFINIUM** platform is designed to handle large volumes of data efficiently, ensuring a smooth transfer of data during the extraction and loading phases.
- Data transformation capabilities in **dataFINIUM** help address the complexity of the data by mapping and aligning it to the structure of the target system.

## 3. DATA QUALITY AND CONSISTENCY:

- During the data transformation phase, we leverage **dataFINIUM's** cleansing capabilities to improve data quality by identifying and rectifying inaccuracies, incompleteness, or inconsistencies.
- We ensure data conformity to defined standards and formats during mapping and transformation, enhancing data consistency.

## 4. DATA MAPPING AND TRANSFORMATION:

- Requirements gathering and mapping enable us to identify the relationships and interdependencies within the insurance data.
- Leveraging **dataFINIUM's** mapping and transformation capabilities, we ensure accurate mapping of data elements between the source and target systems, considering the complex structures and hierarchies.

## 5. DOWNTIME AND BUSINESS CONTINUITY:

- Our team plans the data migration process meticulously, minimising disruptions to your business operations.
- By utilising efficient extraction techniques and data loading features in **dataFINIUM**, we aim for a seamless transfer of data, reducing downtime.

## 6. DATA SECURITY AND PRIVACY:

- **dataFINIUM's** built-in data concealment or obfuscation techniques help protect sensitive data during migration, ensuring compliance with data privacy regulations.

## 7. STAKEHOLDER ALIGNMENT AND CHANGE MANAGEMENT:

- Throughout the process, we maintain effective communication and collaboration with stakeholders, including IT teams, business users, and data owners.
- Our team ensures that all stakeholders are aligned with the migration plan, and that change management strategies are in place to facilitate the transition to the new system.

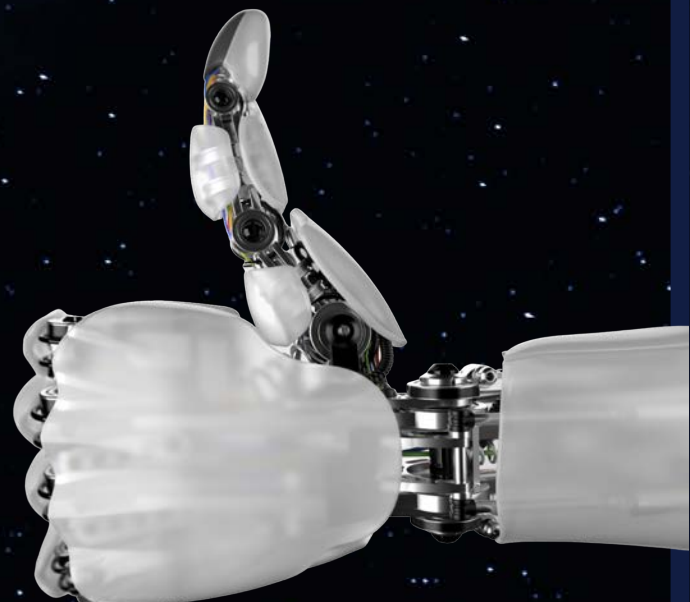
## 8. TESTING AND VALIDATION:

- We perform comprehensive testing and validation using **dataFINIUM's** data validation features.
- This includes executing data validation checks, reconciling data between source and target systems, and ensuring the accuracy and integrity of the migrated data.

## 9. REGULATORY COMPLIANCE:

- **dataFINIUM** supports compliance with regulatory requirements through features such as data concealment, data validation, and reporting.
- We maintain audit trails and provide comprehensive reports that demonstrate compliance during the migration process.

# SOLUTIONS



NAVIGATE THE COMPLEXITIES OF DATA  
MIGRATION WITH CONFIDENCE.



**In Today's Fast-Paced Insurance Landscape, Data Migration is a Critical Challenge that Organisations Must Address to Stay Competitive and Future-Ready.**

With our advanced data migration solution, **migrateFINIUM**, powered by **dataFINIUM**, **The Data Company** empowers insurance organisations to navigate the complexities of data migration with confidence.

By leveraging **migrateFINIUM**, insurers can harness the power of data to identify trends, predict risks, optimise pricing models, and drive business growth.



**SEAMLESS DATA MIGRATION.  
LIMITLESS POSSIBILITIES.**

### United Kingdom

#### England

1st Floor, Talbot House,  
17 Church Street,  
Rickmansworth, Hertfordshire,  
WD3 1DE, United Kingdom

### South Africa

#### Johannesburg

Block B1 & B2 El Ridge Office Park  
100 Elizabeth Road,  
Bartletts  
Boksburg, 1459  
Gauteng, South Africa

### South Africa

#### Cape Town

Building B2, The Vineyard Business Park,  
0725 Adam Tas Street,  
Devon Park,  
Stellenbosch, Cape Town, 7600  
WP, South Africa



UK +44 (0)1494 546089

SA +27 (0)66 483 2004

[canwehelp@thedatacompany.com](mailto:canwehelp@thedatacompany.com)

<https://www.thedatacompany.com>



@The Data Company Technologies



@The Data Company



@DataCompanyTech



@thedatacompanytech