



THE
DATA
COMPANY

CASE-STUDY

KingPrice[™]
INSURANCE

FINIUM

Our Intelligent Data Hub &
Composable Application
Development Platform

CASE STUDY: KING PRICE

DATA MIGRATION



FSP no. 43862 | T's & C's apply

You own it... We'll cover it

Insurance that gets cheaper every month

KingPrice
INSURANCE



ABOUT KINGPRICE

King Price Insurance is a South African-based, privately held insurance company that offers short term insurance. The company is best known for its monthly decreasing car insurance premium model.

Launched in 2012, King Price offer monthly insurance, reducing premiums that decrease with the depreciating value of the asset.

INTRODUCTION

King Price (KP) has an existing insurance platform to manage their commercial business however, KP wanted to migrate this commercial business onto their Ski application (Genasys).

As part of this exercise, Genasys partnered with The Data Company to create a POV to prove out migration process from KP's existing application to Ski application.

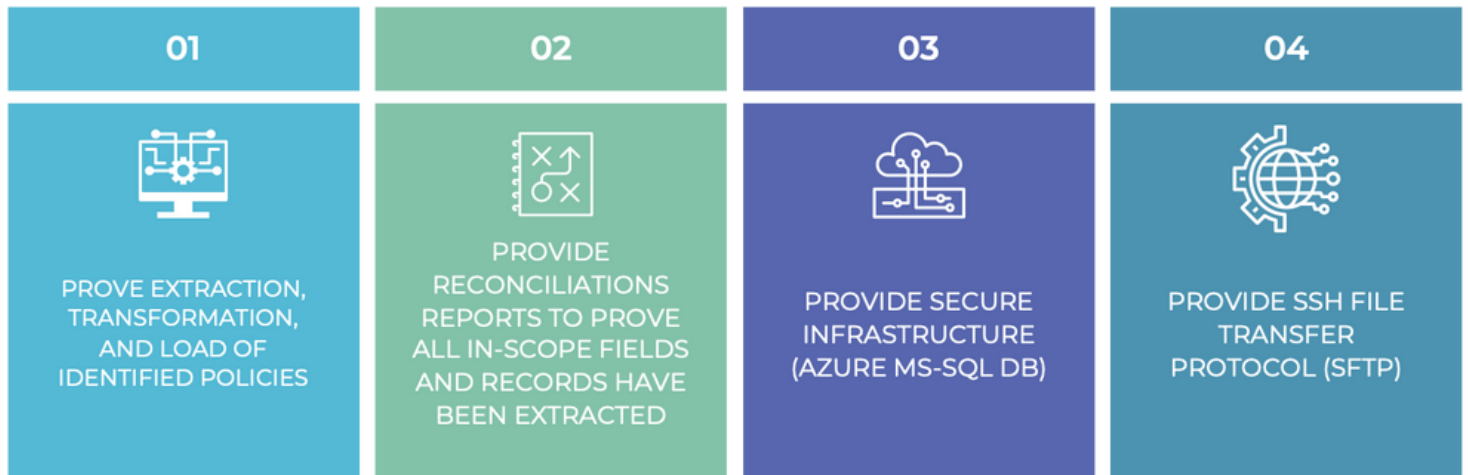
CASE STUDY: KING PRICE



DATA MIGRATION

THE GOALS

- To prove extraction, transformation, and load of identified policies as per the agreed technical solution
- To provide reconciliations reports to prove all in-scope fields and records have been extracted, transformed and loaded together with client and field counts.
- To provide secure infrastructure (Azure MS-SQL DB) from which the data extract will be accessible for nominated individuals as designated by the customer.
- To provide SSH File Transfer Protocol (SFTP) for the transfer of data between the supplier and the customer.



Commercial insurance products

You own it... We'll cover it



Business

Tailor-made insurance for your business, its assets and its unique risks.



Engineering

Specialised cover for the niche risks that engineering contracts and works face.



Community

Insuretech cover and maintenance solutions for sectional title communities.



Cybersure

Cybersure covers your business against cyber attacks and resulting liability.



Agri

Looking to cover your pedigree animals, irrigation systems and more? King Price agri will sort you right out!



CASE STUDY: KING PRICE

DATA MIGRATION

THE APPROACH

To support the team with their strategy, TDC set out to prove the migration was possible:

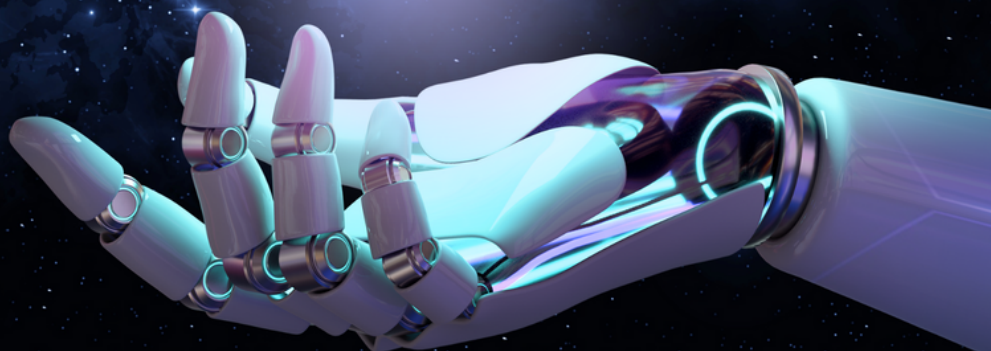
- TDC set up the environment to support the POV
 - Including STFP server setup
 - Webserver set up
 - Installation of SQL server 2019 standard with SSRS
 - Installation and access to these servers
- TDC deployed the data models
- TDC setup imports via the dataFINIUM platform
- TDC conducted analysis - SKi King Price API's
 - Mapped data to API structures
 - Verified the data and logic of API calls
 - Generated the JSON payloads
- TDC initiated dry runs to refine the process
- TDC created reconciliation reports to measure success

THE RESULTS

KP have successfully concluded the POV to provide the applicable confidence to conduct the formal migration process to the production stack.

CONCLUSION

TDC proved that it was possible to extract, transform and load commercial business onto the Ski platform. KP to plan the rollout of c.300 brokers



HOW WE DO IT!

OUR DATA MIGRATION SOLUTION: migrateFINIUM



THE DATA COMPANY FINIUM FRAMEWORK

Our **FINIUM Framework** is comprised of comprehensive set of platforms and solutions designed to **accelerate data projects, enable rapid application development, and facilitate the seamless integration of systems and technologies.**

FINIUM PLATFORMS

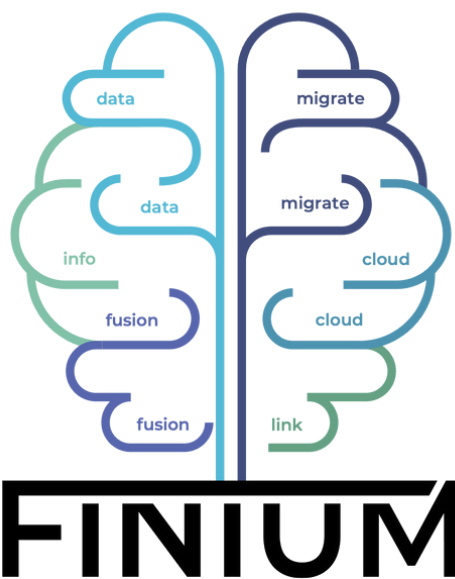
dataFINIUM
Our Intelligent Data Hub



infoFINIUM
Our Composable Development Platform



fusionFINIUM
Our Implementation Methodology



FINIUM SOLUTIONS

migrateFINIUM
Our Data Migration Solution



cloudFINIUM
Our Cloud Solutions: Information and Communications Technology (ICT)



linkFINIUM
Our Technology Integration Hub



migrateFINIUM: OUR FULL DATA MIGRATION SOLUTION

migrateFINIUM is the name of The Data Company's full data migration solution, paving the way for **seamless data migration** which is well-prepared and ready to meet the challenges and requirements of tomorrow, ensuring the **data is future fit**. Meaning, the data is **relevant**, of **high quality**, and **easily accessible** to authorised users. It **scales** with growing volumes and **adapts** to different platforms and systems. Moreover, it **upholds ethical considerations and privacy regulations**, ensuring responsible data usage.

migrateFINIUM is powered by our advanced and highly flexible data platform, **dataFINIUM**, which empowers organisations to migrate their data with confidence.

With over 20 years of experience in insurance migration design, build, and delivery, we have honed **migrateFINIUM** to deliver exceptional results.

Ready to simplify your data migration process?
Discover the power of migrateFINIUM now!

migrate
FINIUM



HELPING ENTERPRISES ACCELERATE THEIR
DIGITAL TRANSFORMATION JOURNEY AND
TURNING DATA INSIGHTS INTO ACTIONS".

Kali Bagary, CEO The Data Company Technologies Limited

United Kingdom

England

1st Floor, Talbot House,
17 Church Street,
Rickmansworth, Hertfordshire,
WD3 1DE, United Kingdom



UK +44 (0)1494 546089

SA.+27 (0)66 483 2004

canwehelp@thedatacompany.com

<https://www.thedatacompany.com>



South Africa

Johannesburg

Block B1 & B2 El Ridge Office Park
100 Elizabeth Road,
Bartletts
Boksburg, 1459
Gauteng, South Africa



@The Data Company Technologies



@The Data Company

South Africa

Cape Town

Building B2, First Floor
The Vineyard Business Park,
Corner Adam Tas Rd and Devon Valley Rd,
Devon Park,
Stellenbosch, Cape Town, 7600
WP, South Africa



@DataCompanyTech



@thedatacompanytech